

4

Tree Trail 4 Explorers Sheet



Spot a tree

tick the boxes as you find them!



Gorse

☐

Blackthorn


☐

Silver
birch


☐

Juniper


☐

Hydrangea


☐

Hazel


☐

Common
lime


☐

Hornbeam

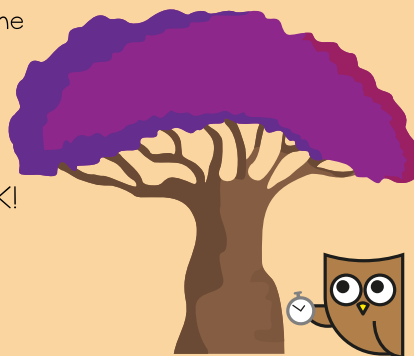

☐

Wood you be-leaf it?

?



The fastest growing tree in the world is called the empress tree. It can grow 6m in it's first year - that's the height of most street lights in the UK!



The earliest surviving species of tree is the ginkgo biloba, fossils of its leaves have been found in sedimentary rocks from the Jurassic and Triassic periods 135 to 210 million years ago!



Wise Woody Words



NO MATTER HOW TALL THE TREE IS,
ITS LEAVES WILL ALWAYS FALL TO
THE GROUND.

- CHINESE PROVERB

Try a tree based tongue twister as you tread the trails!



Through three cheese trees,
three free fleas flew
A freezy breeze made these
three trees freeze
And that's what made these
three free fleas sneeze!

Wood you be-leaf it ?

An old wives tale says:

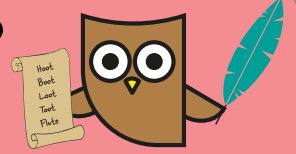
'Kissing's out of fashion, when
the gorse is out of bloom'.



This doesn't create a problem however - gorse blooms
nearly all year round!



Time to rhyme!



How many words
can you think of
that rhyme with...

Leaf

Stimulate your senses as you walk!



Touch
something...

SLIPPERY
Crunchy



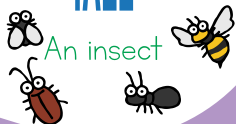
Smell
something...

fruity



See
something...

TALL



An insect



Hear
something...

MA'NMADE



A bird



Make your name from twigs

