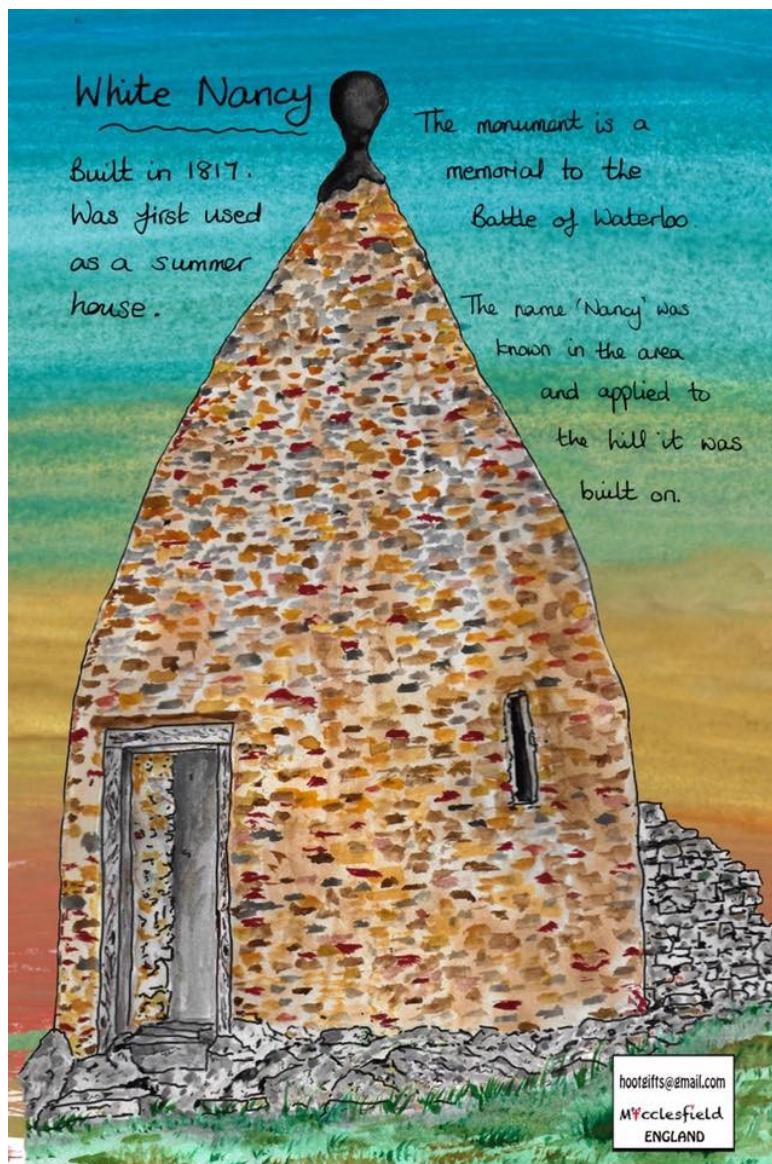


## BRIDGEND COMMUNITY NEWS

Bridging Social  
Isolation

Edition 24



*With thanks to Ian Coppock of Poppy May for the use of this image*

The Bridgend Centre will be producing this newsletter during this time of Social Distancing to hopefully brighten spirits, entertain you, keep you informed and most important of all to help everyone feel that even though we have to put physical distance between ourselves none of us are alone.

Now there is more activity at Bridgend Centre itself we will be moving to producing this newsletter to fortnightly. We are still here for you however and as ever we always looking for contributions from our readers. So if you have an idea, recipe, story, book suggestion, drawing or activity you think others would love, please send it to [info@bridgendcentre.org.uk](mailto:info@bridgendcentre.org.uk) for us to include.

**Our charity shop is now open 10:00 to 4:00 Monday to Friday and 10:00 to 1:00 on Saturdays.**

**We will be continuing to accept donation of up to four bags or boxes by appointment only. Booking an appointment can be done quickly and easily on our website at [www.bridgendcentre.org.uk](http://www.bridgendcentre.org.uk).**

## Trish Swift

We were extremely saddened to hear about the recent passing of Trish Swift, one of our much-loved volunteers.

Trish joined the Bridgend family as a volunteer in 2015 and helped us out tremendously by photographing and listing items for sale on eBay. She also helped us in the shop, sorting and pricing items.

Trish was loved by many of us and we loved to see her calm demeanour and lovely smile when she came to visit.

She leaves behind her husband Pete, daughter Miranda and grandchildren Ewan and Clara. The funeral will be for immediate family only and they have requested that any donations be made to the Bridgend Centre, as it was a place Trish loved very much.



## Floors and carpets at Bridgend

Since we re-opened following lockdown, you may have noticed that our floors look much smarter with painted concrete and carpets in some areas. How did this happen, I hear you ask.

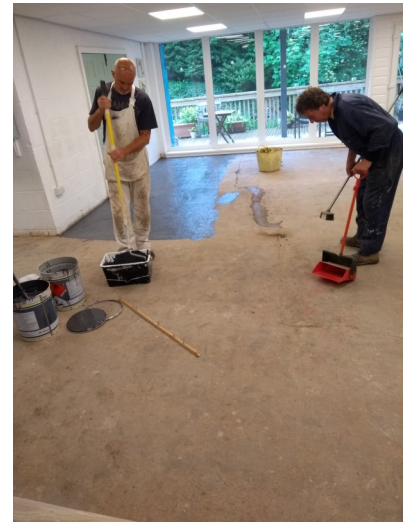
It was all down the Macclesfield Lions and the hard work of two of its members, Vic Spurrell and Ches Orme.

Vic had a carpet contracting business in Stockport, although retired now at 78, so when our manager Becky contacted Macclesfield Lions for support with our internal renovations, he knew he'd be the man to help. He was able to source some carpet for the office and drop-in kitchen and also some lino for the three toilets at very reasonable rates from his contacts in the trade. This was funded by the Lions. Bridgend was also able to secure some more high quality carpet for the Education Room and Library from a major local carpet manufacturer.

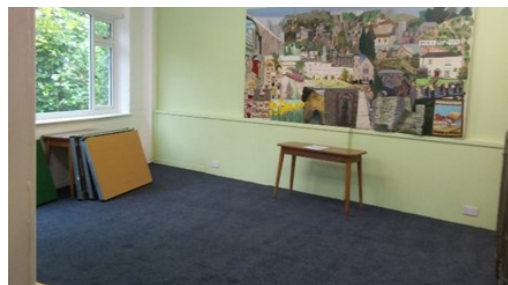
Vic also identified someone who would be able to help with the dusty old concrete floor that we needed painting. Ches Orme is well-known throughout Bollington for his charitable works and was more than happy to donate many days of his time to paint the three coats of paint required on this huge area.

Macclesfield & District Lions Club has served the local community for over 40 years, and in a year on average they fundraise and donate over £18,000 to good causes and carry out welfare work such as distributing 200 Christmas food parcels and providing trips and parties for senior citizens. This work can only be carried out thanks to an enthusiastic membership who also have fun and enjoyment through social gatherings.

This year of course it has been different due to the restrictions around Covid-19, but the Lions continue to raise funds for the community in different ways and will do so for many more years to come. Thank you so much to Vic, Ches and the Macclesfield Lions for their support for the Bridgend Centre.



*Ches and assistant painting the floor at Bridgend*



*The finished fitted carpets in the Education room and Library*



## Made in Bollington (or thereabouts) - Poppy May

*A weekly article about the beautiful arts and craft items we sell at the Bridgend Centre. All are made or designed by people that have some sort of connection from Bollington. This week find out a bit more about Ian Coppock of Poppy May who designs and creates some the local souvenirs that we stock at Bridgend, including the iconic cards and tea towels featuring White Nancy.*



Over the years I have had many jobs, but all have involved creativity. I retired as a countryside ranger in 2011 and my wife and I decided to start a business to promote the wonderful area we live in. I have worked for some amazing artists over the years, John Piper being the most notable. I love painting buildings, and we have so many to choose from, as well as our unique and wonderful landscapes. We try to keep everything as locally made as we can, which can be challenging but it is fun and fulfilling. We enjoy doing the Treacle Market and chatting to our lovely customers.

***Ian Coppock—Poppy May***

## Item of the week— Bamboo Eco Mug



Every year in the UK 2.5 billion coffee cups are used and thrown away — enough to stretch around the world roughly five and a half times—but less than 1 in 400 are recycled.

Around 500,000 cups are littered every day which causes an unsightly blight on our environment. Even when cups are disposed of in a waste bin, the majority of paper cups are plastic lined and as such unable to be effectively recycled.

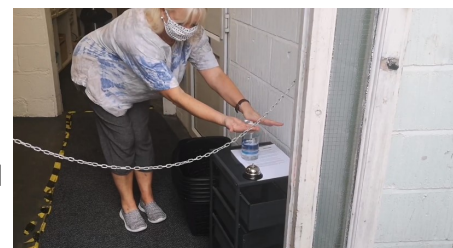
Not the most cheerful of news but with our item of the week you can be part of the solution rather than part of the problem! Guaranteed to make your morning brew taste all the sweeter to know that you are doing your bit to protect the environment and support your local charity!

## Bridgend's first Facebook Video is launched



This week saw Bridgend's first video on Facebook, filmed by Trustee and shop volunteer Alison Leah and starring our very own Jane as presenter.

The video gives people a virtual tour of the new-look Bridgend shop. It outlines our Covid safe procedures and in addition to showing the products we have available in the shop, hopefully helps to reassure our shoppers that we are controlling everything we can to make your shopping experience a safe and pleasant one.



Feedback has been very positive and we will post more in future. We are even trying to work up the courage to do a 'Facebook Live' sometime soon!



## Love Bollington Market sets up stall again

The guys at Love Bollington had a stunning return last Sunday, when their first market following the lockdown took place at Ovenhouse Farm. The organisers took a 'safety-first' approach to the event and excellent Covid-secure procedures were in place. Many people reported that it felt like a safe and relaxing event to attend. The weather was absolutely gorgeous, so it really felt that Summer had returned for a while.

All the usual stalls were present, including hot food and drink, gorgeous foodstuffs to take away, crafts, souvenirs, antiques and vintage items from their stalwart stall holders. The market was even visited by our esteemed Mayor John Stewart!



The next Love Bollington market will be in December which will be a fantastic opportunity to grab some goodies and gifts just in time for Christmas.



## Craft event at Mount Hall

Janine from Mount Hall sent us this lovely photo of resident Dulcie, who created some lovely vintage cards with sparkly dragonflies to brighten the room and to be posted to friends and family.

Dulcie is from a local farming family and loves wildlife. She has lots of friends and family to keep in touch with so the cards are always appreciated!



## Healthwatch Cheshire publish public views on Health and Care during Covid

Since the beginning of May 2020, Healthcare Cheshire have been asking Cheshire residents to complete a survey to tell us about their views and experiences during the Coronavirus (COVID-19) pandemic so they can understand what is working well and what could be improved, as well as considering people's mental health and wellbeing during the pandemic.

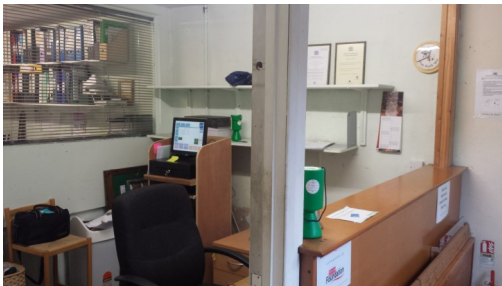
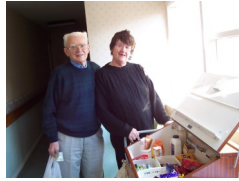
The following is a report of the findings from the Healthwatch Cheshire Health and Wellbeing During Coronavirus survey. It is based upon the 1,121 responses up to Friday 3<sup>rd</sup> July 2020, of which 551 are from residents of Cheshire East and 571 are from people living in Cheshire West and Chester. The nature of the survey being made up of multiple questions means that across Cheshire they have close to 4,000 individual comments on health, care, mental health and wellbeing during this period. This particular report focuses on what people told us about accessing health and care during this period, with a separate report published regarding people's mental health and wellbeing across Cheshire. You can read the findings here: <https://healthwatchcwac.org.uk/news/healthwatch-cheshire-publish-public-views-on-health-and-care-during-the-coronavirus-covid-19-pandemic-report/>





## Bridgend's Belated Birthday—30 years young!!

Saturday 12th of September should have seen the Bridgend family celebrating our 30th birthday at Bridgefest. Due to the current pandemic we have had to postpone the celebrations until next year when hopefully we are all allowed to be together again in music and celebration. In the meantime we thought a little trip down memory lane might be in order. Please enjoy this selection of images from our first 30 years and here's to the next 30!!!





## Bridgend walks setting off once more

This Wednesday, the first Bridgend walk for six months set off from the Centre up Harrop Valley. It was a lovely Autumnal day and the group enjoyed following the route which is a favourite Heritage Trail, number two (Woods and Wildflowers).

There were seven people plus the walk leader, which is fully compliant with the government legislation that came out this week. Support groups and organised sports and outdoor activity are exempt from the 'rule of six' as long as adequate social distancing measures are in place (such as maintaining 2 metres distance between each other). We have made the decision to limit the groups to eight which ensures that maintaining social distancing is achievable and pleasant on the walks.

Next week we will be trialling having two groups walking the same route 15 minutes apart. One will leave at 10:15am and one at 10:30am. You can book on either group on the calendar of our website. Please arrive on time (not early), particularly if you are on the 10:30am departure to ensure we don't have too many people out side the Centre at one time and people don't get confused about which group they are in!



### Bridgend Walks—new guidelines

Booking is essential. Please go to the calendar on the home page of our website [www.bridgendcentre.org.uk](http://www.bridgendcentre.org.uk). Walks are £3 - payable online on booking. Due to the limited number of places, we are limiting numbers to one place per booker. If you cannot make it, please let us know so we can free up the place for someone else. Please note that we do not provide refunds should you wish to cancel.

Please bring hand sanitizer on the walks in order to clean your hands if you touch stiles or gates. Please also remember to maintain 2m distance between yourselves and fellow walkers. If any situations arise where this is not possible, please temporarily wear a mask. Unfortunately, we will not be able to serve hot drinks and refreshments after the walk at the Bridgend Centre.

We will collect your name and phone number on the day for track and trace purposes. Thank you for your understanding during this unusual time.

### You can support us

The Bridgend Centre has been in Bollington for 30 years now, delivering vital services to the whole community. So many vulnerable people depend on the Centre and we are working to ensure we can provide as much support to them as we can during this strange time of social distancing.

If you would like to help us to keep the Centre open during these challenging times, please go to our website to donate: <https://bridgendcentre.org.uk/home/donate/>.

Alternatively you can donate quality items to our shop. Please go to our website to book a slot.

**Thank you**



### Do you love walking? We are looking for volunteers!

The Bridgend Centre and Bollington Walking Festival are looking for volunteers to be involved with walking in Bollington. We need people who are interested in walking, perhaps leading walks or organising events.

The Bollington Walking Festival is an Autumn annual event that lasts for ten days and we run approximately forty walks for the general public to attend in order to enjoy getting out in the great outdoors in Bollington and surrounding areas.

Roles we are looking for include:

- Leading walks
- Organising events
- Delivering and distributing leaflets and signage

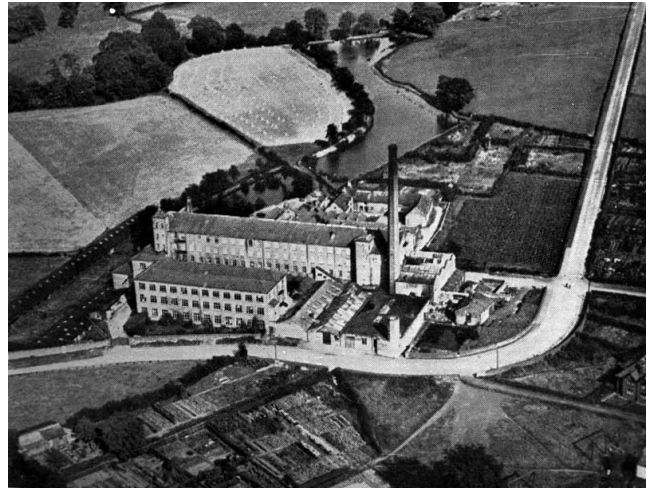
We are also looking for more walk leaders here at Bridgend. This could involve occasional volunteering, or more frequent involvement. You could perhaps take on both roles as they complement each other. Training and support would be provided if required.

If you are interested in being involved, please email the Bridgend Centre at [info@bridgendcentre.org.uk](mailto:info@bridgendcentre.org.uk).



## Reminiscences of Bollington—The Antrobus Family

In the 18<sup>th</sup> and 19<sup>th</sup> centuries one of the significant land owning families in Cheshire was the Antrobus family – they even had a village named after them! When Bollington was first becoming an industrial town it was the Antrobus family who put the money into building mills. In particular Lowerhouse mill was built in 1818/19 by Philip Antrobus. His father, George Antrobus, built the Rookery amongst other houses and mills in the town, and his son, another George, also worked in Bollington mills.



Philip Antrobus unfortunately suffered an early death. It looks as though he knew that his end was nigh because in 1829 he commissioned a Will. He died in 1830 leaving his wife and eight infant children. His Executors went to work on his new Will and horror of horrors, they discovered that it made no provision for any living (income) for his bereaved family! Nowadays it would be possible for the inheritors to call a solicitor to prepare a deed of amendment and effectively re-write the Will to suit their needs. But in 1830 such a change had to be made via a private Bill to Parliament, which when passed became 'An Act to authorize the granting of Leases of certain Parts of the Estates (subject to the Trusts I of the Will) of Philip Antrobus Gentleman, deceased.'

This may have been a great inconvenience to the family, but it was highly fortuitous to us when we want to look at Philip's circumstances. Within the Act there is a Schedule of all the properties in Bollington (and Prestbury) owned by Philip Antrobus at the time of his death. Unfortunately, they are not always listed with their street addresses so while we know that for instance, he owned 'A Public House in Bollington, with garden' we don't know which one! However, it does list Lowerhouse mill (later let to Samuel Greg jnr) together with the manager's house and 53 cottages; various other lands at Lowerhouse including Moss Farm and Lower House Farm; Turner Heath House and the Rookery, together with named fields around them, as well as various industrial facilities at Turner Heath. In some cases it tells us who was occupying the premises – the really interesting one is the Rookery which was the home of William Crossley. This gentleman was the engineer who actually built the Macclesfield canal (no, it wasn't Thomas Telford!). At the time, 1830-32, Crossley would have spent a lot of time in Bollington while they were attending to the problems around the building of Palmerston Street aqueduct and the adjacent embankments, so it was clearly necessary for him to be living nearby.

Now the moral of this story is that it is very important to have a Will and to get it written by someone who doesn't forget your wife and children! **Tim Boddington**

## Wildlife spotting

Pete Turner sent us these lovely photos of some birds he spotted recently. They are a Stone Chat and a Swallow.

Also, Tereza Marie Kubikova Webb captured this gorgeous picture of a herd of deer on the road to Pott Shrigley from Bollington on Wednesday.



*Photo reproduced by courtesy of Tereza Marie Kubikova*



## Holiday reading—can you work out who took which book to the beach (in 2019!)



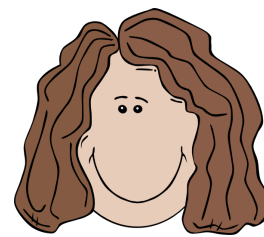
Don



Jen



Steve



Vanessa

“my book's fiction”

“my book's author is male”

“I can't bear fiction”

“no comment”

Climb that Career Ladder by  
Rich Pocket

Darcy the Divine by Milly  
Boone

Dracula's Dilemma by Mina  
Harker

Knights of Passion—an ac-  
count of the crusades by Felix  
Fitzgeorge

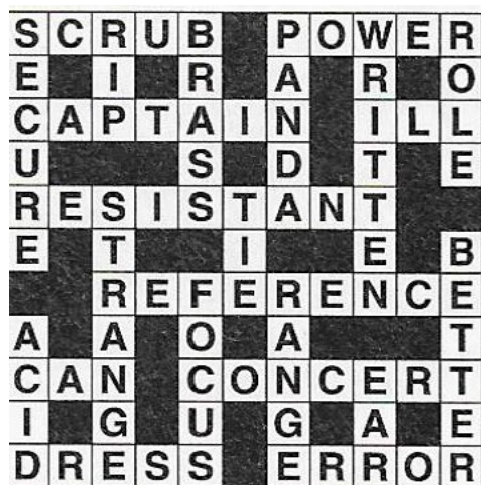
Buy me and I'll become a mil-  
lionaire

A woman has taken me on  
holiday

NO COMMENT

My print is so small, you need  
glasses to read me

### Missing links—the answers



### Plant of the week - Wild Pansy

Also known as heartsease, the tiny wild pansy has beautiful heart shaped petals and will grow in both annual and perennial forms across the country. They come in any combination of purple, yellow and white. Yet another name for the Wild Pansy is Love-in-Idleness, as referenced by Oberon in Shakespeare's *A Midsummer Night's Dream*, which, according to the Roman myth, Cupid accidentally shot with an arrow, causing its juice to become a highly effective love-potion. That, unfortunately for hopeful lovers, is just a fiction.



### You can support us

The Bridgend Centre has been in Bollington for nearly 30 years now, delivering vital services to the whole community. So many vulnerable people depend on the Centre and we are working to ensure we can provide as much support to them as we can during this strange time of social distancing.

If you would like to help us to keep the Centre open during these challenging times, please go to our website to donate: <https://bridgendcentre.org.uk/home/donate/>.

Alternatively you can donate quality items to our shop. Please go to our website to book a slot. Thank you.

**Bridgend Centre**, 104 Palmerston Street,  
Bollington, Cheshire. SK10 5PW

Temporary phone number: 01625 813173

Email: [info@bridgendcentre.org.uk](mailto:info@bridgendcentre.org.uk)  
[www.bridgendcentre.org.uk](http://www.bridgendcentre.org.uk)

Registered charity number 1123287

We are a Charitable Incorporated Organisation (CIO)

