

Bridgend Centre

Annual Report 2020-2021



BRIDGEND CENTRE
- BOLLINGTON -



Bridgend Centre

at the  of our community

Message from the Chair of the Board of Trustees

The year 2020 to 2021 was the most unique and challenging in our history, as it was for everyone. The Covid pandemic changed our lives beyond recognition in a variety of ways; with repeated lockdowns, being forced to close our charity shop and social distancing measures in the periods in between, we have faced significant disruption to our ability to deliver our services.



The safety of our service users has always been our number one priority, particularly due to the vulnerability of many of the people who use our services. During this year, we adopted new ways to keep in touch with our community and try to minimise social isolation as much as we could, including carrying out our groups and activities over Zoom and creating a new newsletter called 'Bridging Social Isolation' that has proved very popular.

Despite these challenges, shop income continued to be strong when we were open and we received government grants for the weeks we had to close.

Another significant achievement during this time was the completion of the Tree Trails project. Refurbishment of four trails in the local area focussed on the wealth of trees in this area. We redesigned a previous walk booklet that had been created over ten years ago, made it available digitally on our website and replaced markers and benches in the landscape.

Due to our inability to hold 'in-person' fundraising events, we went online and held two very successful events using new digital online technology; the Virtual Hill Race and the Winter Auction and Raffle. These were great, innovative ways to both raise funds and stay connected with each other.

As ever, a huge thank you must go to our hard-working staff and volunteers. We are so grateful for them, and they make Bridgend the truly unique place it is. Their dedication and flexibility have been a real support to us during these difficult months. Great thanks also must go to John Gooding, who decided to step down as Trustee this year after many years dedicated service to our charity.

Looking to the future, we have a number of exciting and positive developments in the pipeline and I am so pleased that Bridgend's future looks bright as we move onto new challenges. We are so relieved and thankful that we can now deliver the 'in-person' services that we used to, whilst still being mindful of the risks Covid19 poses.

Geoff Brown

Bollington, November 2021

Bridgend Services

The Bridgend Centre provides a range of essential services to our community to reduce social isolation and improve people's lives



Drop-in community kitchen

The perfect place for a friendly chat over a hot drink

Walks

Guided walks for all fitness levels throughout the week



Support

Community Workers are always on hand to be someone to talk to

Activities

A wide range of sessions including Art, Craft, Bridge, Mah Jong, Choir and Spanish



Volunteering

Enables people to contribute to the local community



Bridgend Buddies

Reducing loneliness and isolation in our community by teaming up volunteer buddies with someone in the community who may struggle to get out

Information Hub

Leaflets and materials regarding local services. We also signpost people in the right direction for more specialist advice



Bridging Social Isolation newsletter

Connecting our community, this reaches approximately 500 per edition (100 of which are hand-delivered to people who may find it tricky to get out and about)

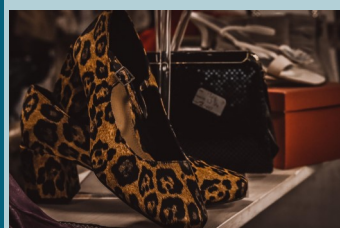


Walking Trails

We have refurbished our 'Heritage Walking Trails' that explore the beautiful surrounding countryside

Social Groups

Our 'Talk and Games' group meet every Thursday afternoon and take regular trips out to local attractions



Charity Shop

Our unique shop is an Aladdin's cave. Visitors love to browse and make new friends in the process!

Social Impact

April 2020-March 2021

With Covid lockdowns and social distancing measures in place for the entirety of this year, the numbers of people who have visited our Centre fell during this financial year. However we still helped significant numbers of people throughout the twelve months.



431 people accessed the 'Drop-In' facility where they can sit down, have a hot drink and talk to others



117 different people went on 37 Bridgend walks



57 people attended 62 activity sessions (online)



54

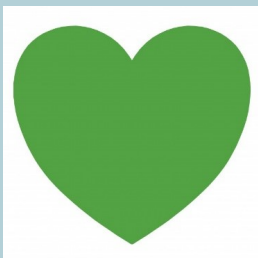
People accessed information from the Centre

92 volunteers worked 1782 hours during the year



39

People accessed community support for personal crisis or mental health problems



6

Buddies partnerships continued to give support through the tough times



47 editions of 'Bridging Social Isolation' were produced and reached approximately 500 people every edition

Financial Overview

The Statement of Financial Activities (“SOFA”) for the year ended 31 March 2021 is shown on page 7 of the End of Year Accounts.

This financial year was a challenging year for the charity as the building and charity shop were closed for four months due to Coronavirus lockdowns and footfall was restricted to allow for social distancing. However, we still ended the year with a trading surplus of £5,625 (2020: £10,842).



Income:

Our income sources were a very different picture in 2020-2021 in comparison to other years because of the Coronavirus pandemic and government support available for charities and businesses. Total income was £174,451 (2020: £203,153). Income from our charity shop was £47,640 (2020: £71,344), which is a very healthy performance, given the limitations on opening imposed on us as detailed in page 1.

Income through the Government ‘Furlough’ scheme was £35,061 and from other ‘COVID’ grants was £19,669.

Fundraising Activities contributed £5,689.

During this financial year we registered for VAT as our trading income went over the required threshold. Due to the significant amount of money we spent on building work during this period, upon submitting our first return we were issued with a refund of £24,591 from HMRC.

Expenditure:

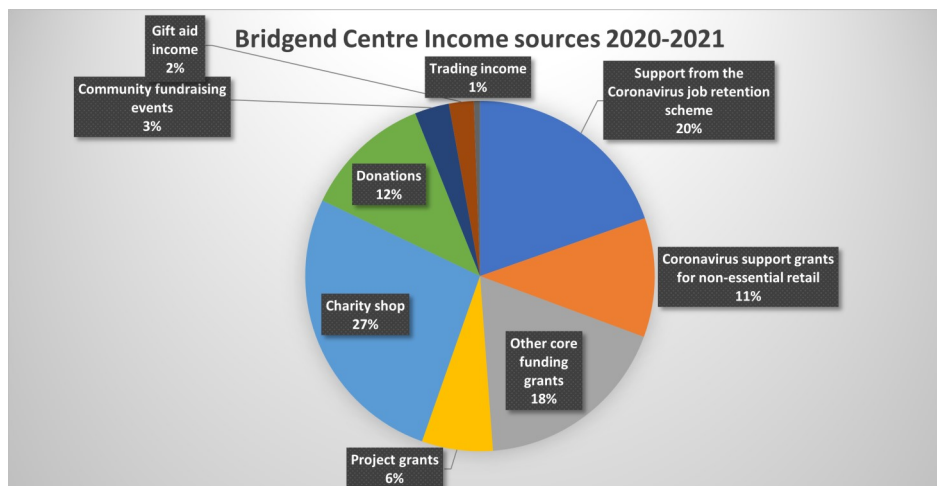
Expenditure was £168,826 (2020: £192,311). The main expenditure was Staff Costs, £115,888. This was offset by the ‘Furlough’ payments from the Government.

End of year position:

The Charity generated a cash inflow of £27,710 (2020: cash outflow £76,187), with cash at the end of the year of £99,348 (2020: £71,638).

Net current assets were £113,278 (2020: £108,381) at the year end.

Barry Matthews—Treasurer



Volunteers make the Bridgend world go round

Here at Bridgend we are truly reliant on our volunteers to enable us to deliver the services we do. Here we celebrate just a handful of the 92 people who volunteered for us this year, and the variety of roles they do.

Wonderful Walk Leaders



Daniel is a recent addition to our hardy team of walk leaders. Come rain or shine he has a cheerful smile as he leads our group out into the Bollington countryside. He likes volunteering for us so much he has recently joined our eBay team too!

Shop Superstars

Shirley is another of our volunteering team who wears more than one hat for us. In addition to leading some of our Wednesday walks, Shirley is an integral part of our shop team and is chief in charge of the Haberdashery. She brings her expertise from her time working at John Lewis' Haberdashery department and is never phased by the mountains of incoming donations that meet her every Monday morning!



Brilliant Buddies

Glenys really enjoyed her time as a Bridgend Buddy for Liz, especially because when they were first matched, she realised that she had met her before on a bus to Pitlochry six years ago!



Liz has now moved away but they will always be friends and Glenys can't wait to be teamed up with her new match through Bridgend Buddies.

Woodcraft wonders

Eric and Peter are regular faces in our workshop. Always keen to be busy, they make an array of handcraft items for us to sell in the Bridgend shop, such as bird tables, bird boxes, planters and even hedgehog houses. They also enjoy fixing various things around the Centre. There really is no end to their DIY talents!



Our excellent ebay team

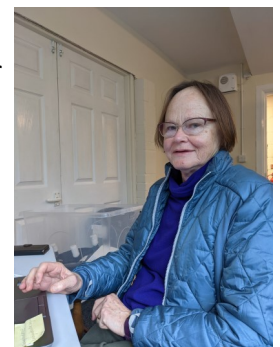
Dave Hasler is the longest serving member of our eBay team and he has a huge amount of knowledge of a wide array of items that may get put on our eBay page.



In addition he helps us out with his grill master skills on the BBQ at our events and numerous other transportation jobs for us with his trusty campervan.

Multi-skilled volunteers

Chris Brear has been part of our volunteering team for many years in many roles at the Centre. She has lead numerous walks for us and has been pillar of the annual walking festival. She has also volunteered in the shop and most recently as part of our busy eBay team.



Thank you to our Funders and Supporters.....

The Bridgend Centre would not exist without the vital support from our donors, supporters and sponsors. Many wonderful people and local businesses regularly support our Centre through their valuable time, monetary donations and contributions to raffles and competitions. We would also like to thank the organisations below for large grants and donations that have made a vital contribution this year.

We couldn't do it without you all. Thank you.



- Bollington Town Council
- Broome Family Trust
- Co-op
- eBay for Charity
- Edward Gostling Foundation
- The Emerson Foundation
- Garfield Weston Foundation
- Love Bollington Market
- Macclesfield Lions
- Macclesfield Round Table
- Magic Little Grants—Local Giving
- National Lottery Community Fund
- The Poynton Foundation
- South West Peak Landscape Partnership and Heritage Lottery
- Tesco Bags of Help
- Yorkshire Building Society Charitable



Bridgend Centre

104 Palmerston Street

Bollington, Cheshire

SK10 5PW

www.bridgendcentre.org.uk - info@bridgendcentre.org.uk

We are a Charitable Incorporated Organisation (CIO)

Registered Charity number: 1123287



Trustees

Geoff Brown—Chair

Barry Matthews—Treasurer

John Gooding—Secretary

Johanna Maitland

Lisa Cox

Sue Brocklehurst

Alison Leah

Staff

Centre Manager—Rebecca Lea

Deputy Centre Manager—Anna Hatley

Kerry Langstaff, Jane McGill-Hoyland, Anna Barker, Maxine Lomas (Community Workers)

Avril Corbett (eBay Co-ordinator) Robert Davies (Finance Officer) Diana Storey (Charity Shop Worker) & Helen Turner (Cleaner)

With thanks to Little Lens Photography and Andy Aitchison Photography for allowing us to use their photographs in this report and to Adam Francis for producing the wonderful graphic image of the Bridgend Centre